

Interreg



ITALIA-SLOVENIJA



TRAIN

Progetto standard co-finanziato dal Fondo europeo di sviluppo regionale
Standardni projekt sofinancira Evropski sklad za regionalni razvoj



TRAIN: Industrial Day

TRAIN is an INTERREG project focused on big data and disease models, which fosters cross border cooperation between scientists and industry in the biomedical field to facilitate the diagnosis and treatment of many diseases, such as myocardial infarction, difficult wounds even in patients with diabetes and inflammatory diseases.

The Industrial Day dedicated to TRAIN project is organized within the **Meet In Italy FOR LIFE SCIENCES**, which this year will be held in Trieste from 16 to 18 October at Magazzino Molo IV.

OCT
16-18
2019

meet in italy
FOR LIFE SCIENCES
Molo IV Trieste, FVG

The project in numbers



6 Partners

Start date: 25.09.17 End date: 24.03.20

Budget: 1.243.702,22€

Budget ERDF: 1.057.146,89€



www.ita-slo.eu/train



International Centre for Genetic
Engineering and Biotechnology
Developing Knowledge



TEHNOLOŠKI PARK
LJUBLJANA



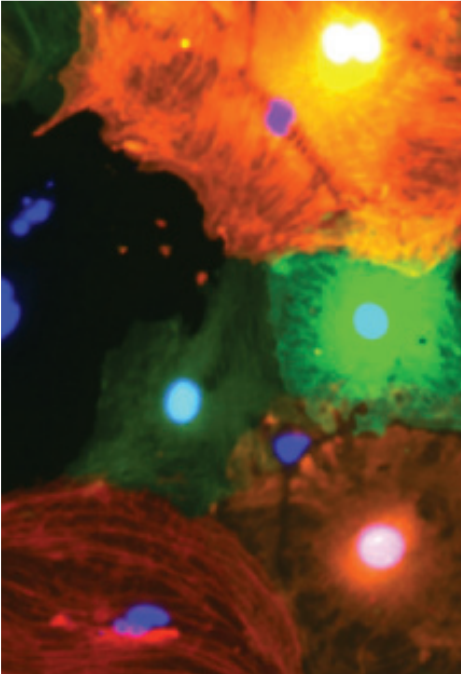
biovalley
investments



Institut
"Jožef Stefan"
Ljubljana, Slovenija

MEDNARODNA
PODIPLOMSKA ŠOLA
JOZEFA STEFANA





■ Workshop

17 October - 9 am - Auditorium:
Experts from biotechnological field will discuss the use of "disease in a dish" models to study human disease, drug development, and high throughput screening.

The lectures will cover three focal research areas which represent great opportunities for industry application to improve both diagnosis and disease therapy.

■ Brokerage Event

During the Meet In Italy, starting 11 am to 6:30 pm the Brokerage Event will give companies, start-ups, universities and research centres the opportunity to meet and find new collaborations for the development of products, services, projects, and distribution.

■ Stand

On the 17th, at the stand you will have the opportunity to experience the innovative process first hand in a unique **virtual reality** presentation, discovering treatments and administering them to a patient to see their therapeutic effect.

www.ita-slo.eu/train



@prjTRAIN



@prjTRAIN



@prjTRAIN