

Analiza ranljivosti glede na posledice podnebnih sprememb

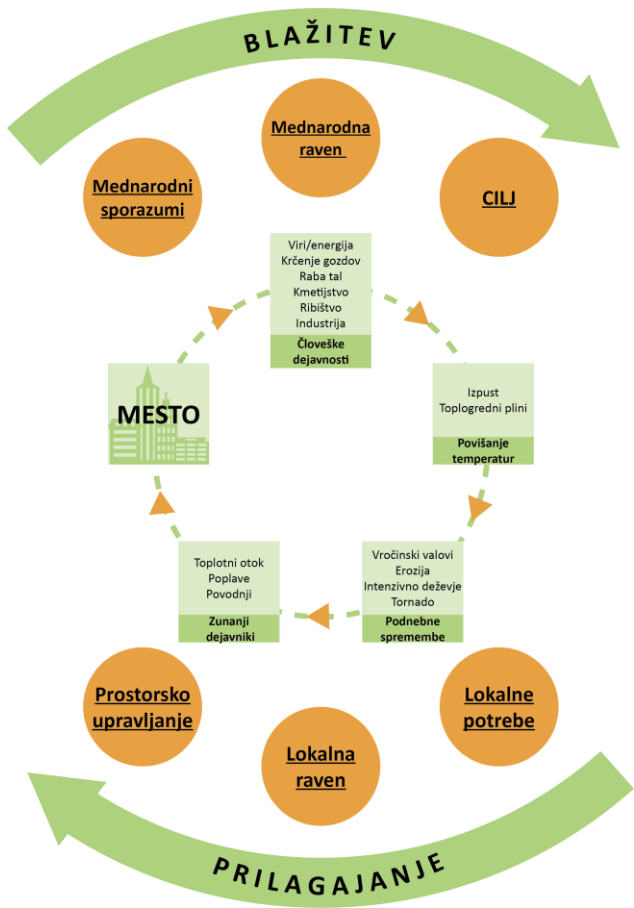
1/3

*Denis Maragno, Phd
Univerza Iuav v Benetkah*

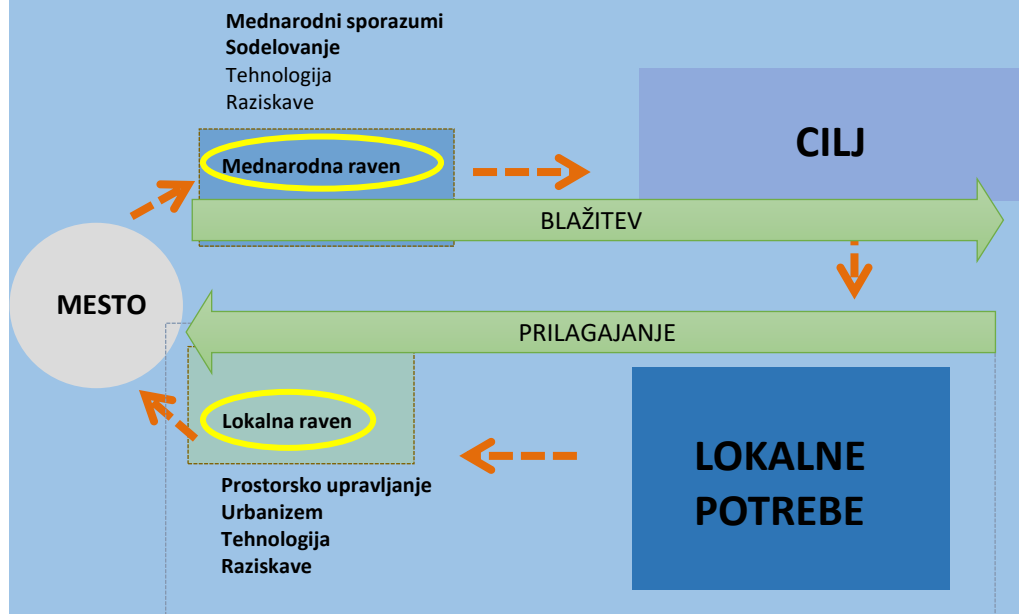


Kje moramo ukrepati?

Kako je primerno ukrepati?



Podpora energetske in klimatske

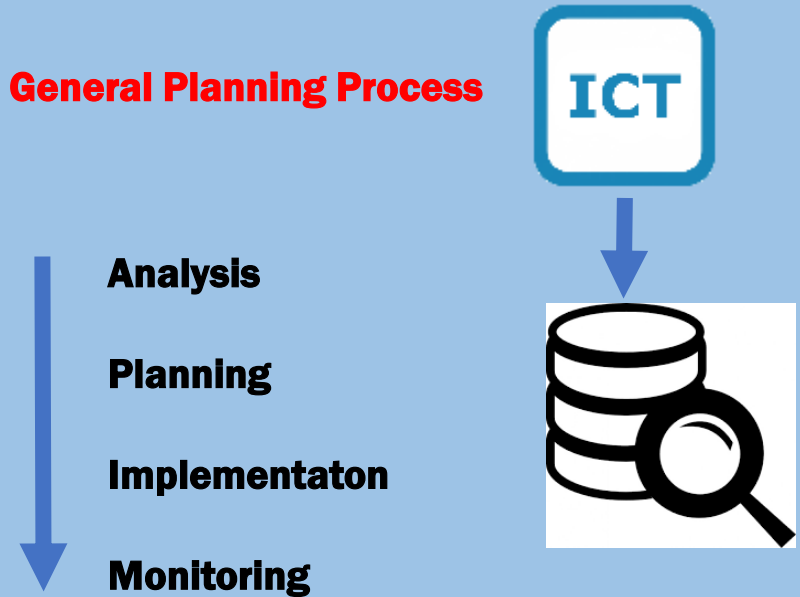


Mesto v prehodu

- 1 Področje znanega**
Stvari, ki se jih zavedamo in jih razumemo
- 2 Področje znanega neznanega**
Stvari, ki se jih zavedamo, vendar jih ne razumemo
- 3 Področje neznanega neznanega**
Stvari, ki se jih ne zavedamo, niti jih nismo sposobni razumeti

Podpora energetske in klimatske

General Planning Process



Prostorska kompleksnost

1 Potreba po oceni podnebnih sprememb

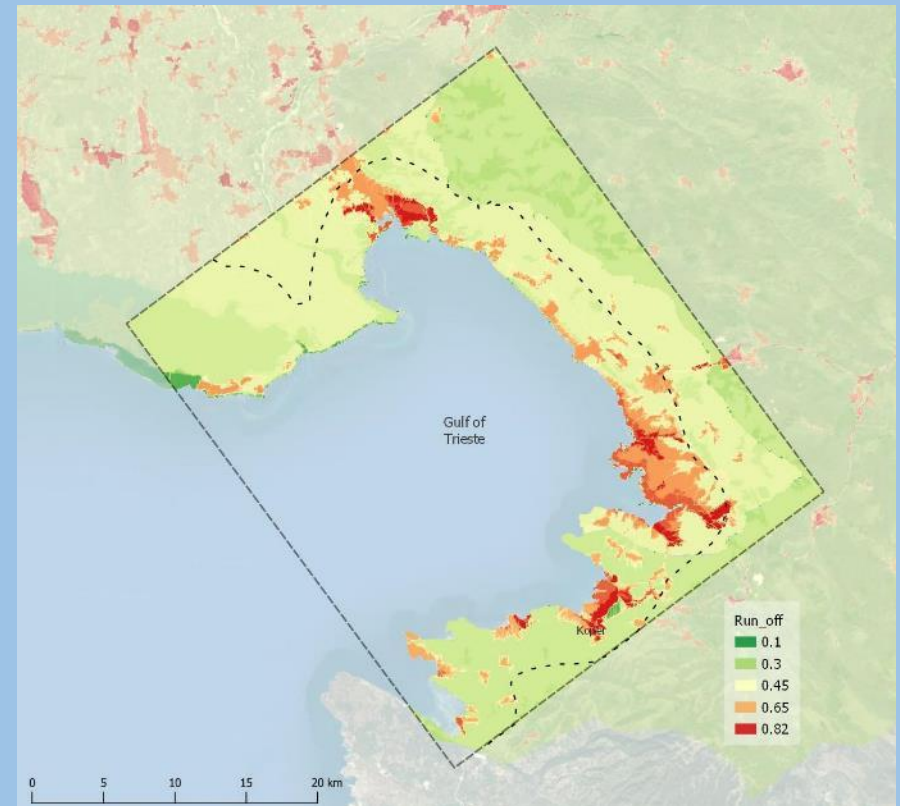
Katera so tveganja in kateri so vplivi

2 Potreba po ocenah ranljivosti

Kje se vpliv okrepi

3 Potreba po ocenah tveganja

Kje imamo največ škode? In zakaj?



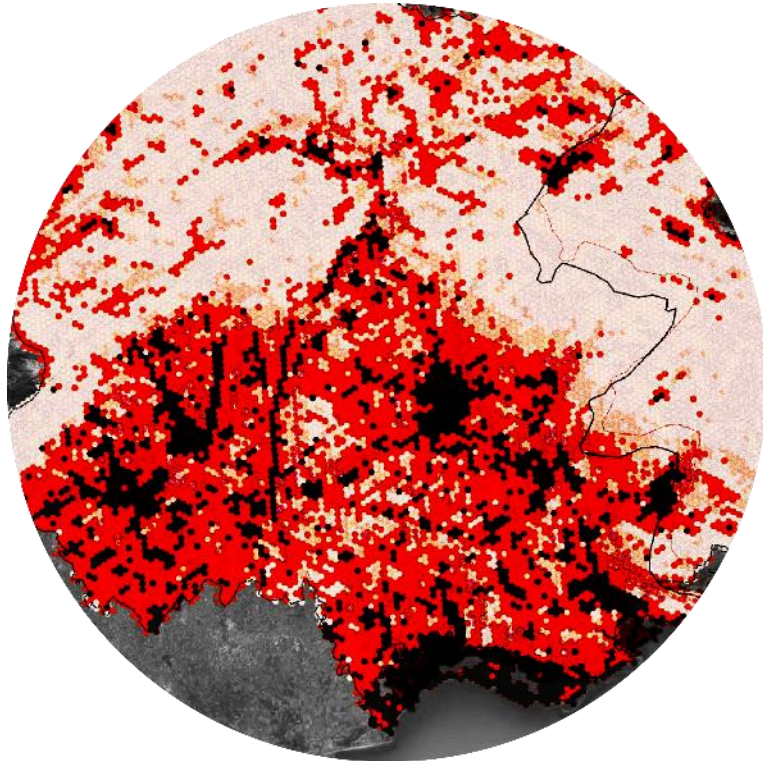
Geografski odgovor na vprašanje prostorske narave

**ORODJA ZA
PODOPORO
ODLOČANJU**



**PRIKAZ
REŠITEV**

2.1 Assessment Methodologies Definition



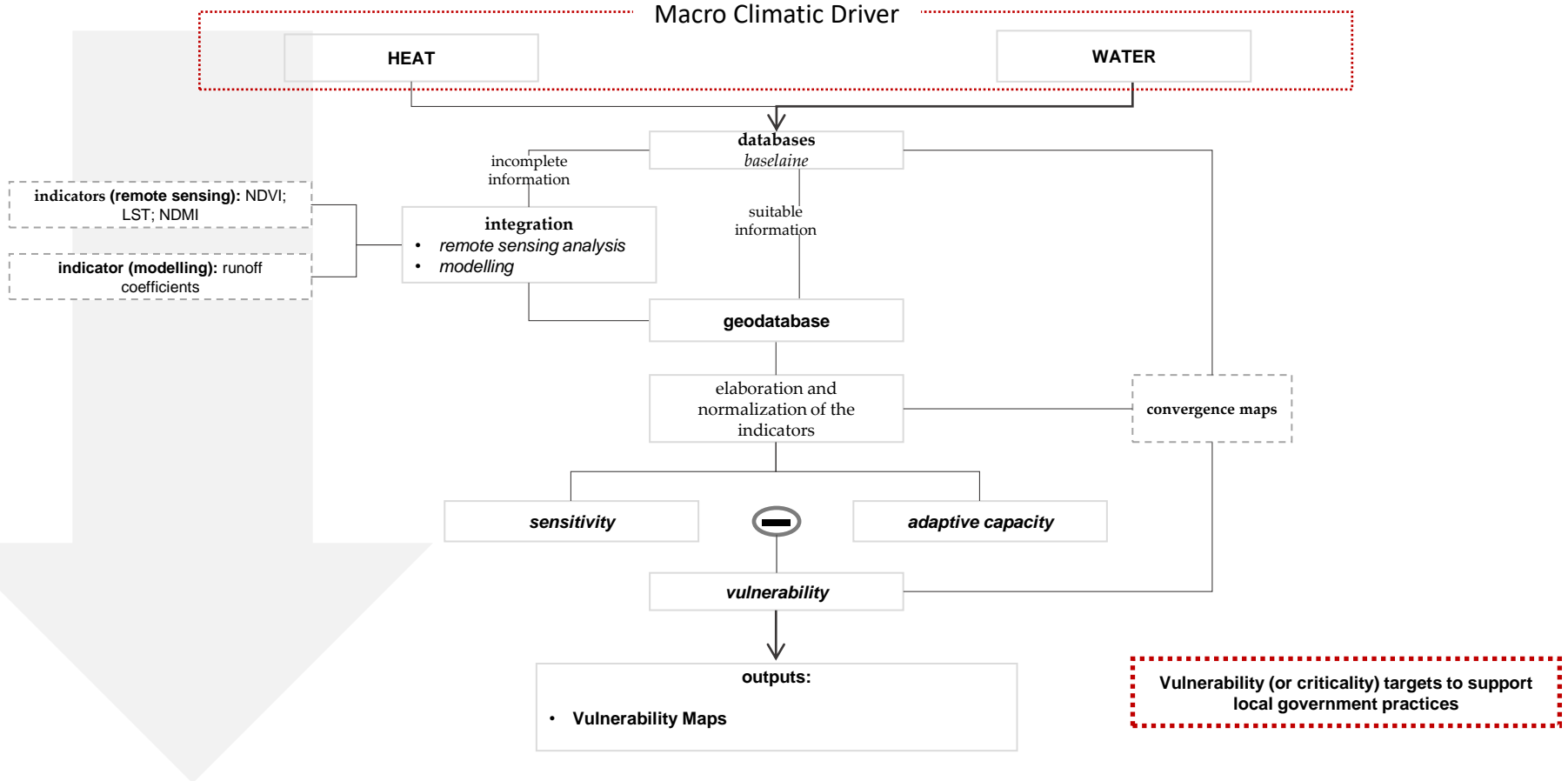
Vulnerability Maps

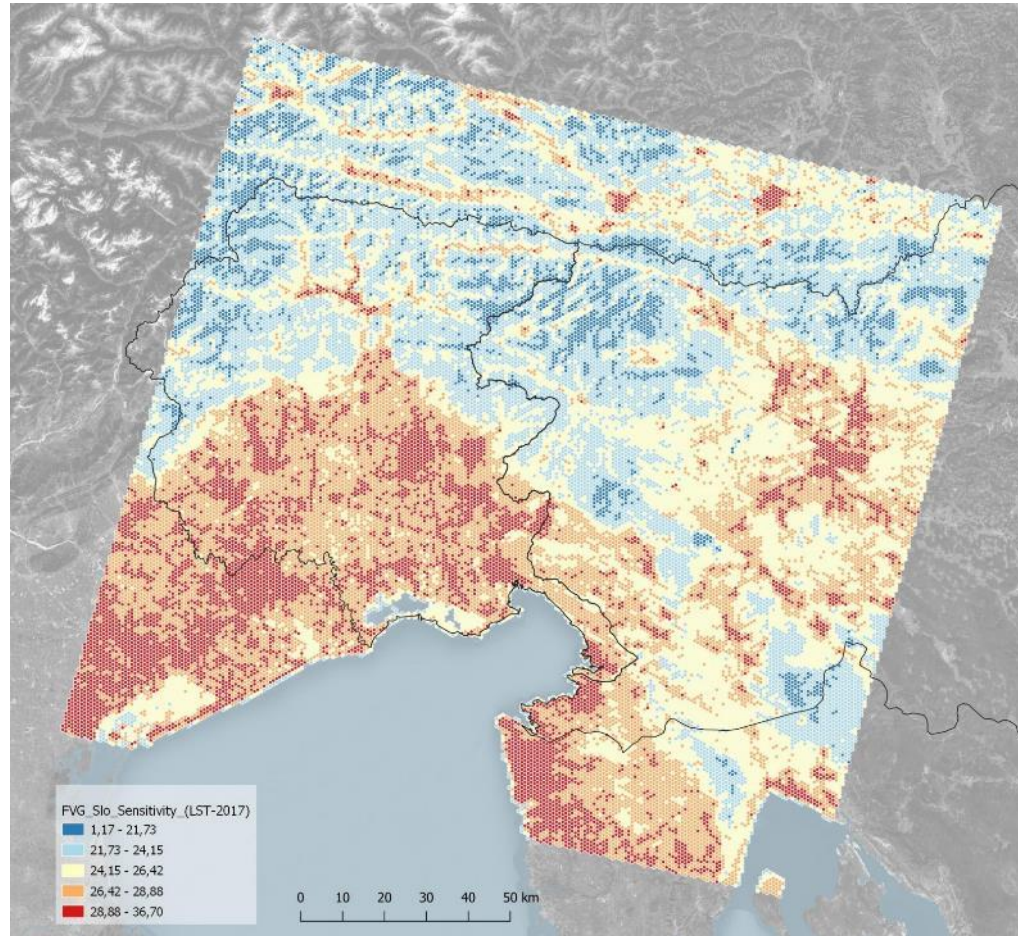


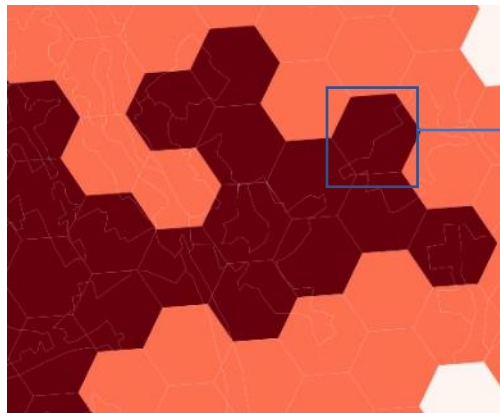
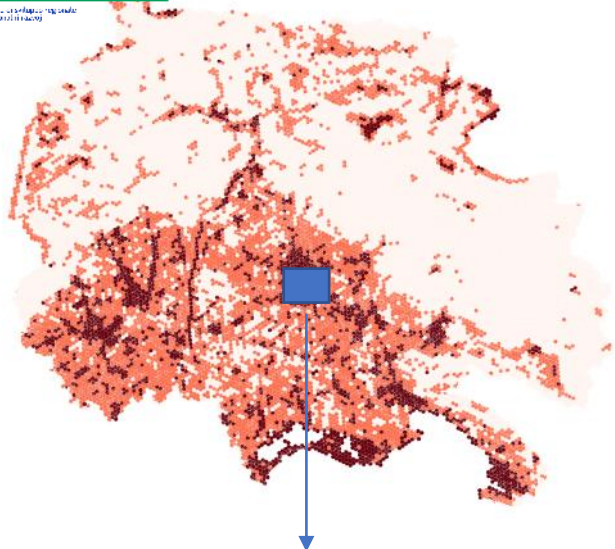
**Defining
transboundary
Strategies**

**Supporting Local
Authorities in
implementing
SECAPs**

2.1 Assessment Methodologies Definition







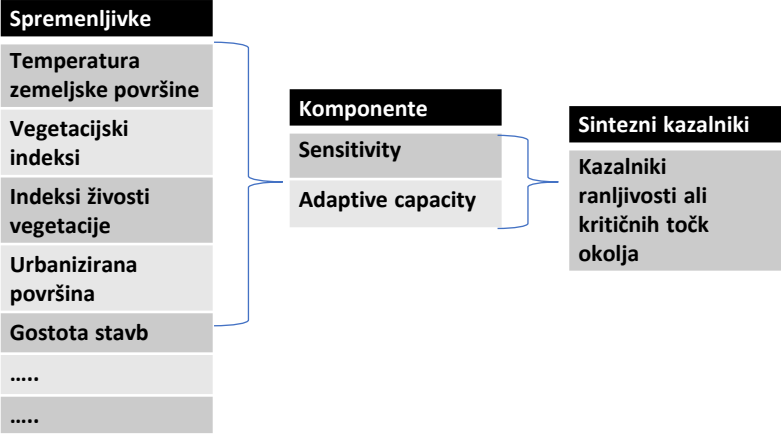
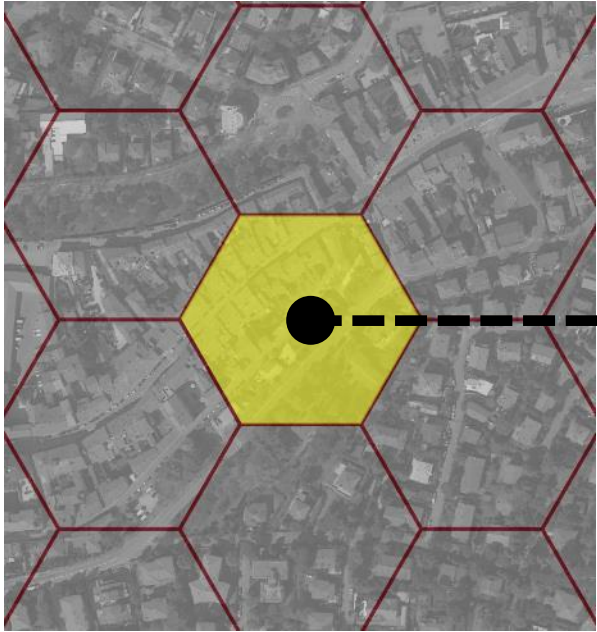
Geometric framework

UHI Vulnerability

indicators
Land Surface temperature (LST) 2017
Normalized Difference Moisture Index (NDMI) 2017
Normalized Difference Vegetation Index (NDVI) 2017
Built Up 2017
Vulnerability
Urban flooding (average value)

#Struktura in lastnosti relacijskega modela (shapefile) za arhiviranje vektorskih podatkov

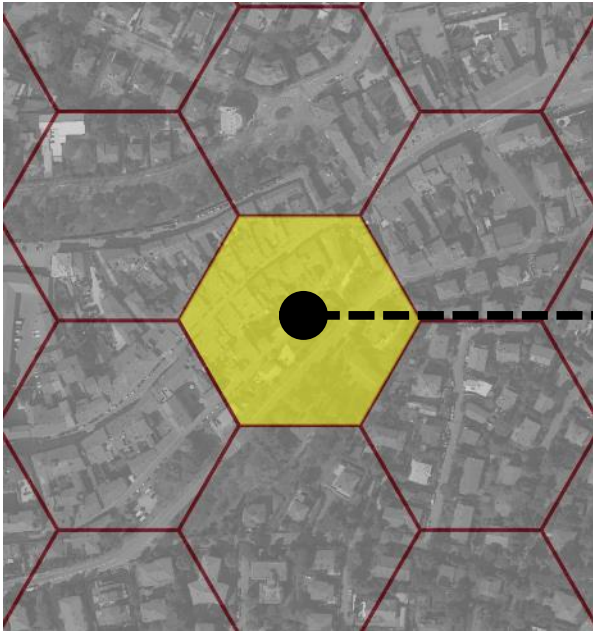
Vsebina šesterokotnega polja (referenčna statistična enota):
Morfološko-okoljske spremenljivke in komponente ranljivosti



$$\text{Ranljivost} = (\text{sensitivity} - \text{adaptive capacity})$$

#Struktura in lastnosti relacijskega modela (shapefile) za arhiviranje vektorskih podatkov

*Vsebina šesterokotnega polja (referenčna statistična enota):
Morfološko-okoljske spremenljivke in komponente ranljivosti*

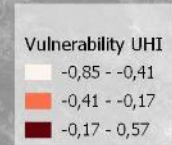
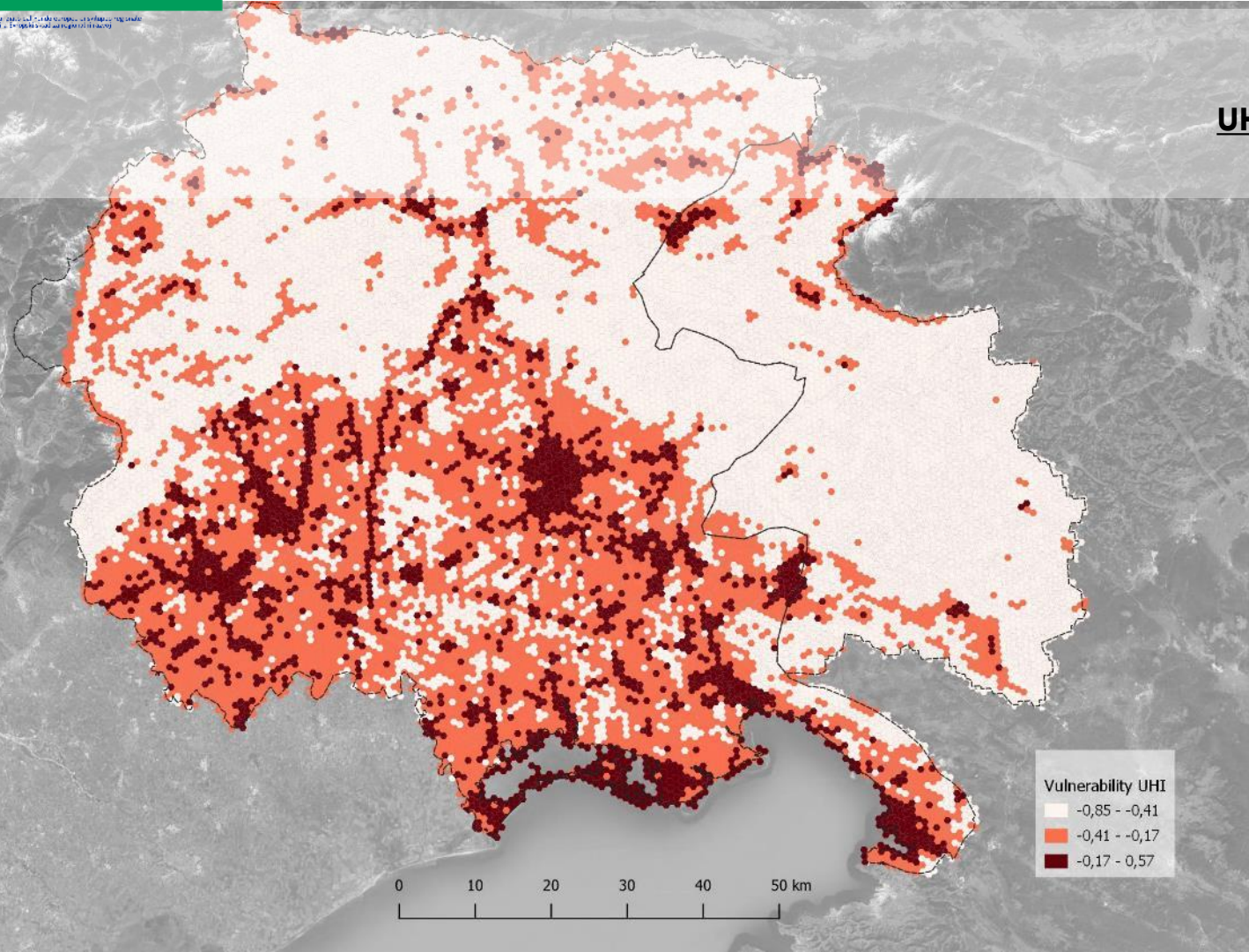


Maglia_esa_80 :: Totale degli elementi: 15539, Filtrati: 1, Selezionati: 1

Area	Sum_Area_e	LSTmean	NDVImean	NDMImean	dendef	sens	adapt	vuln	Vuln_n	Runoffmean
1	1210...	5827,988486810...	23,87567452208...	0,362618661702...	0,112014160293...	0,35052	0,481986	0,317358	0,164628	0,835372 0,764012493862...



UHI Vulnerability



Class range

Low
-0,85 - -0,41

Medium
-0,41 - -0,17

High
-0,17 - 0,57

UHI Vulnerability

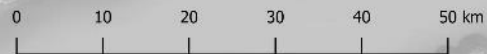
Class range	Urban fabric %
Low -0,6 - -0,28	5%
Medium -0,28 - -0,01	46%
High -0,01 - 0,54	49%

Vulnerability UHI_Urban_fabric

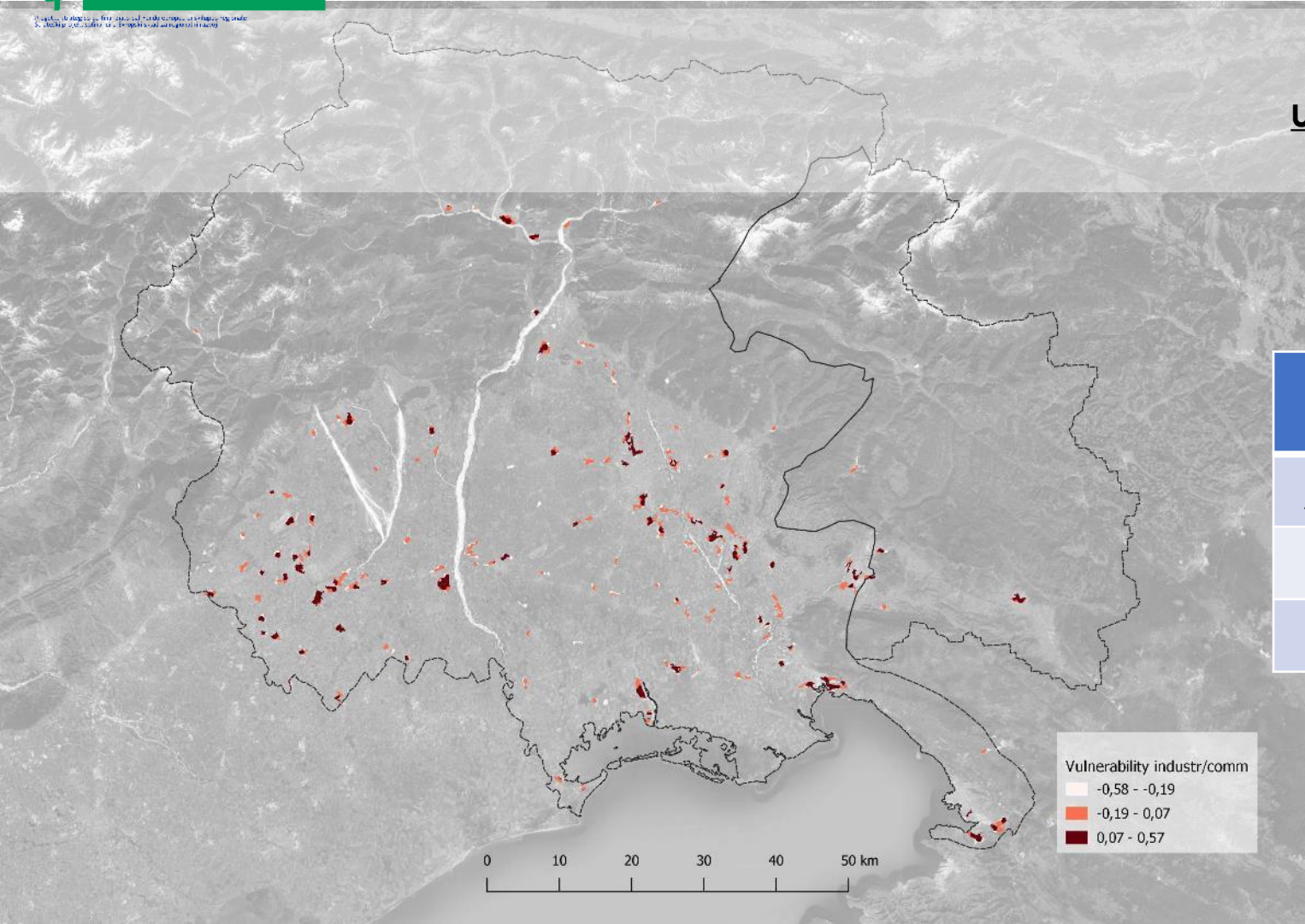
-0,6 - -0,28

-0,28 - -0,01

-0,01 - 0,54



UHI Vulnerability

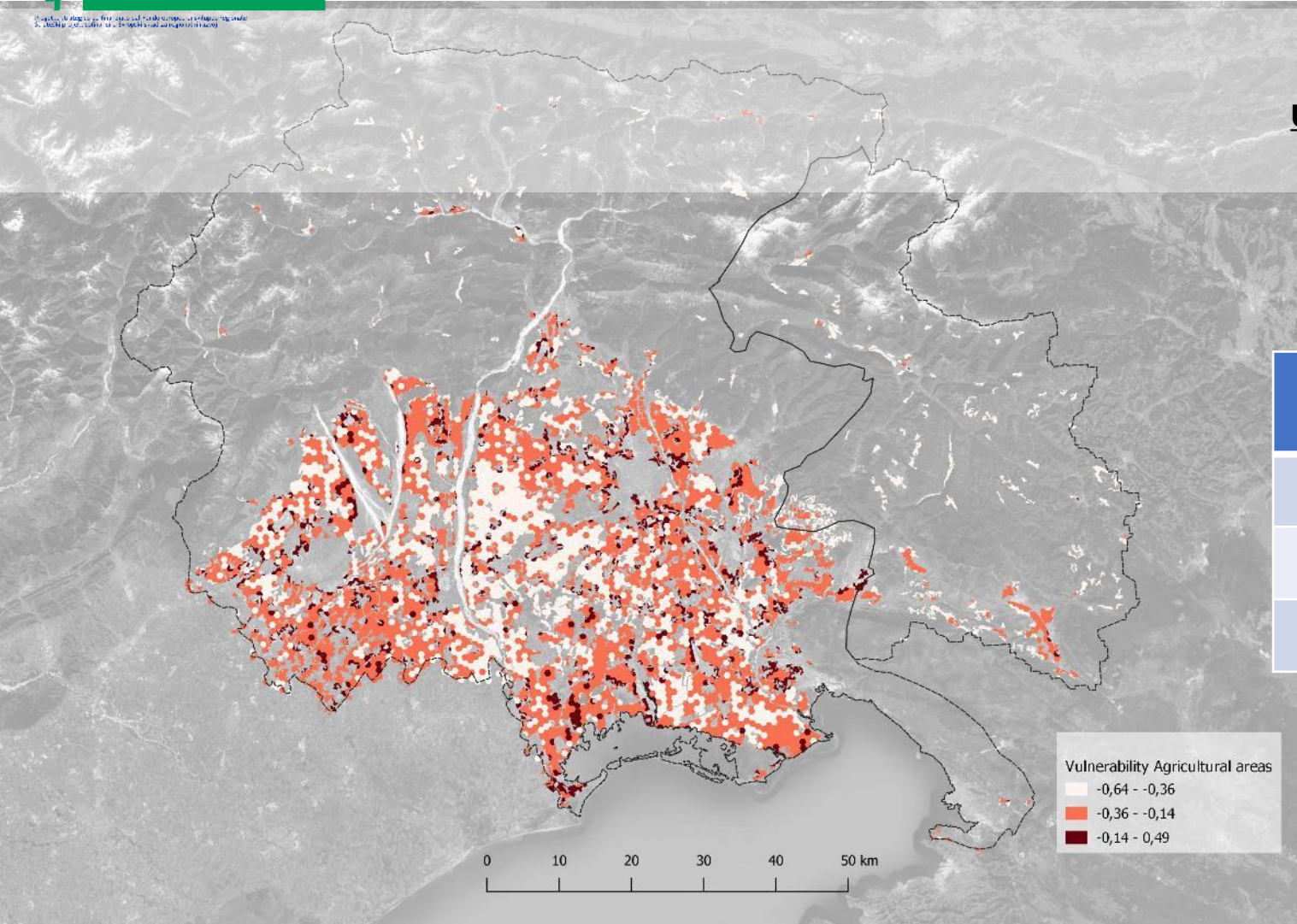


Class range	Industrial commercial units%
Low -0,58 - -0,19	14%
Medium -0,19 - 0,07	45%
High 0,07 - 0,57	41%



UHI Vulnerability

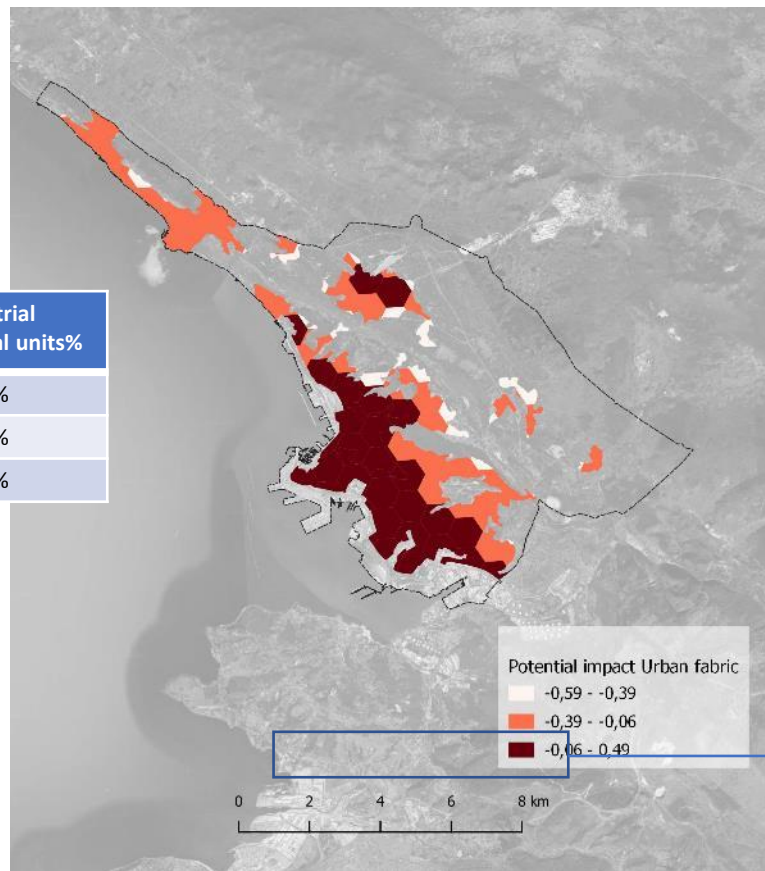
Class range	Industrial commercial units%
Low -0,64 - -0,36	43%
Medium -0,36 - -0,14	48%
High -0,14 - 0,49	9%



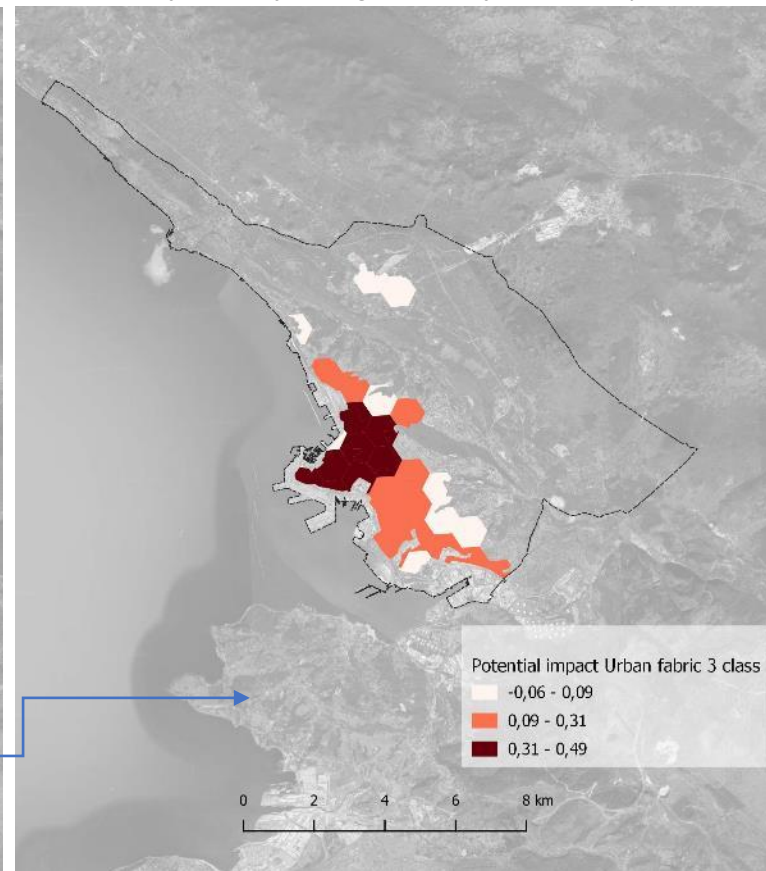
2017 UHI VULNERABILITY SCENARIO

Vulnerabilità vs. Urban fabric (CLC 2018)
Three class distribution of vulnerability

Class range	Industrial commercial units%
-0,06 - -0,09	30%
-0,09 - 0,31	46%
0,31 - 0,49	24%



Vulnerabilità vs. Urban fabric
Sub-classification of the higher level of vulnerability



Hvala za pozornost!

dmaragno@iuav.it